

Career Exploration

Commonwealth Governor's School

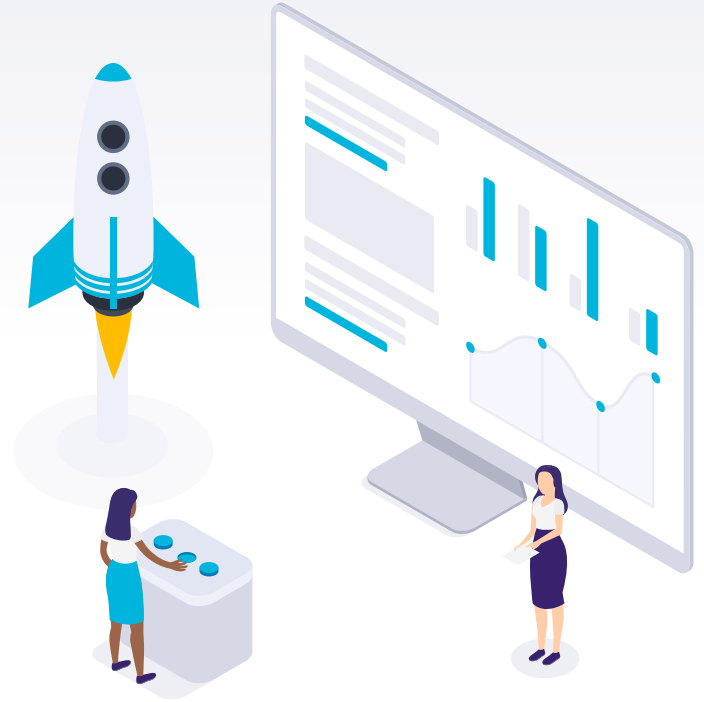


► Topics to cover:

- ▶ The importance of career exploration
- ▶ Impact of unique needs and characteristics of gifted students
- ▶ Work-based learning defined
- ▶ CGS student experiences



Importance of Career Exploration

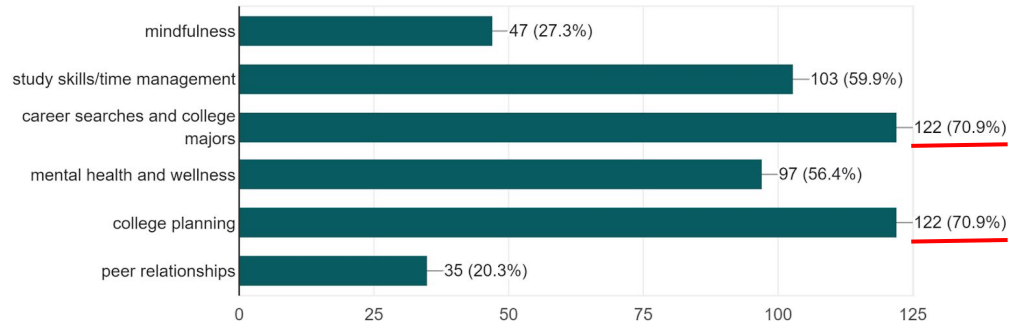


Commonwealth Governor's School

21-22 student survey data

Pick topics that you would be interested in learning more about

172 responses





Career Exploration is simply learning about various occupations and their "fit" with your unique career preferences, e.g. the skills, interests and values you want satisfied by your career.

Source: UC Berkeley Career Center



Gifted & Highly Motivated Learners

- ▶ Cognitive & emotional complexities
- ▶ Asynchronous development
- ▶ Outside influences of family and peers
- ▶ Multipotentiality





Time to ask different questions...



"What college are you going to?"



"What do you want to do?"



What do you enjoy learning about?



What careers seem interesting to you?



What skills are you good at?



What do you want to learn more about?

National Student Clearinghouse Research Center

Figure 1. First-Time, Full-Time Degree-Seeking Students at all Institutions (N= 1,845,033)

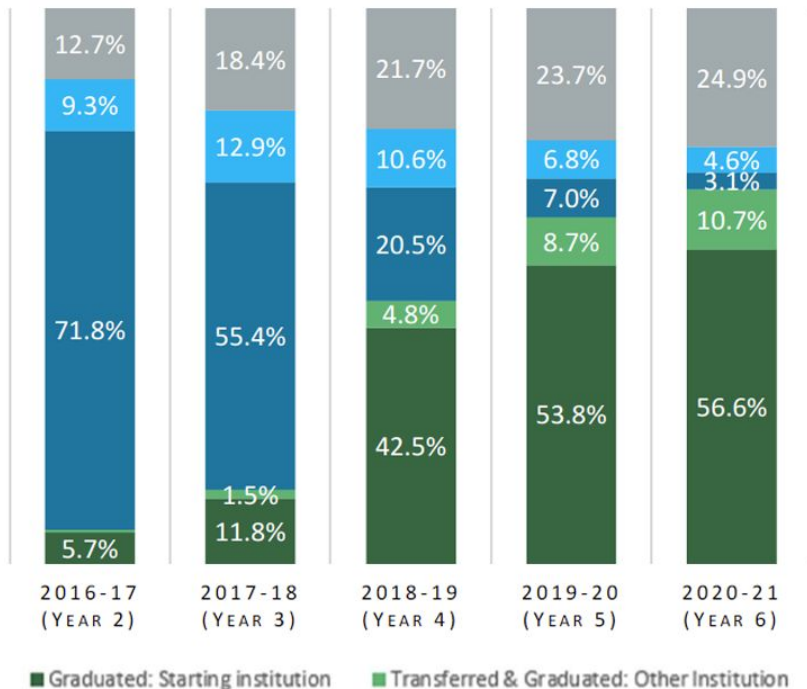
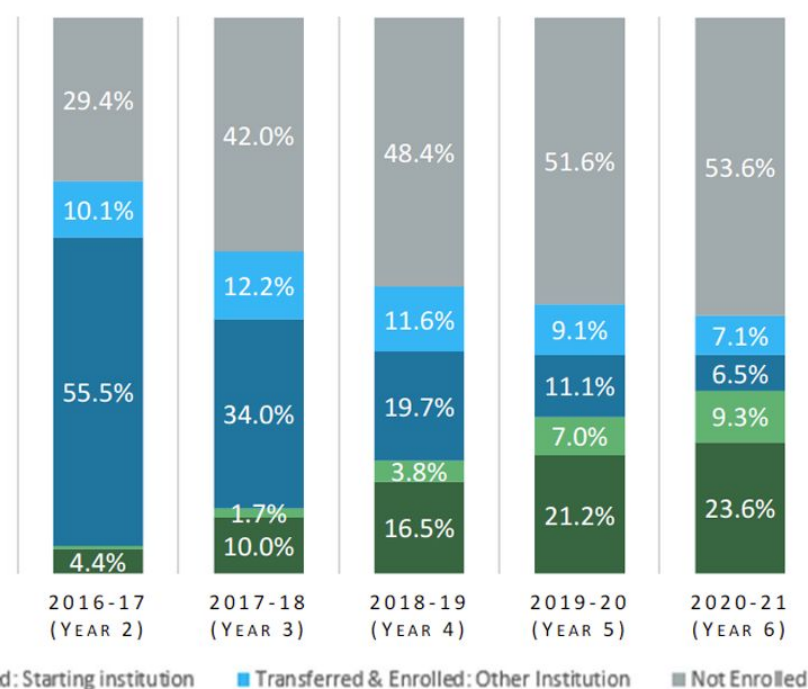


Figure 2. First-Time, Part-Time Degree-Seeking Students at all Institutions (N= 411,248)



CTE and career exploration



Career Development

- ▶ Academic and Career Plans (ACP)
- ▶ Why are elective classes important?



► Work-Based Learning

What is WBL?

What are the benefits of WBL?

Spotsylvania County WBL Offerings



► Stafford, King George and Caroline

Stafford County Schools

- ▶ <https://www.staffordschools.net/workbasedlearning>
- ▶ CTE electives
- ▶ [College and Career Pathways website](#)
- ▶ Scott Flath, 540. 658.6678
- ▶ Ferida Cralle, 540.658.6677
- ▶ Internship/Externship opportunities vary

King George Schools

- ▶ Teacher Cadets. The contact is Dr. Lowe and the form comes out in January/February.
- ▶ Marketing Co-op: Students sign up as part of the course selection process.
- ▶ Nurse Aide Program: There is a workshop in the spring semester and students will need to complete an application (available in January).
- ▶ School Store work based learning experience. The contact is Mrs. Strauss.

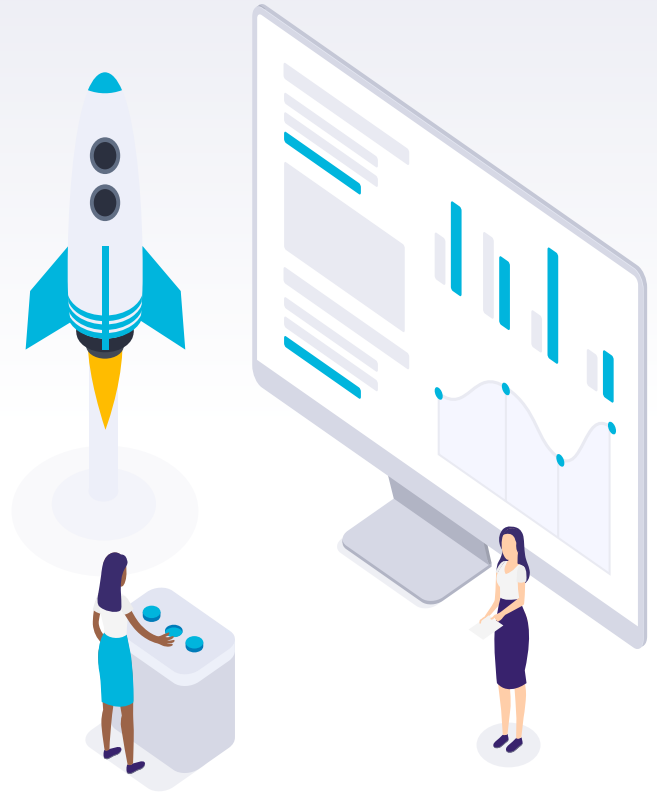
Caroline County Schools

- ▶ Caroline Career Connection Cohort - teacher/counselor nominations
- ▶ Marketing Coop
- ▶ Internship/Externship
- ▶ Students who are interested should contact their CHS Counselors
- ▶ Deadlines for these opportunities vary.

Student Internship & Externship Experiences

Mailynn Nguyen, Stafford HS

Jordan Low, Spotsylvania HS



Career Exploration Resources



FOR STUDENTS USING NAVIANCE:

- ▶ Strengths Explorer
- ▶ Career Cluster Finder
- ▶ Career Interest Profiler
- ▶ Career data

ALL STUDENTS:

- ▶ High school counselors
- ▶ High school or Division CTE departments
- ▶ High school gifted resource teachers
- ▶ VA Career View <https://www.vaview.net/>
- ▶ VA Education Wizard
<https://www.vawizard.org/wizard/home>
- ▶ College Board Big Future
<https://bigfuture.collegeboard.org/>

Additional Resources

- ▶ [Summer residential Governor's School programs](#)
- ▶ Summer regional Governor's School programs
- ▶ Camps and opportunities at colleges
- ▶ Volunteer opportunities
- ▶ ASVAB Test (Armed Services Vocational Aptitude Battery)
- ▶ U.S. Bureau of Labor and Statistics - [Occupational Handbook](#)
- ▶ [VDOE Post-secondary Opportunities webpage](#)
- ▶ [Internship Opportunities for high school students](#)

THANKS!

Any questions?

- ▶ **Maggie Morganti,**
mmorganti@cgsva.org
- ▶ **Emily Hall,**
ehhall@spotsylvania.k12.va.us

